

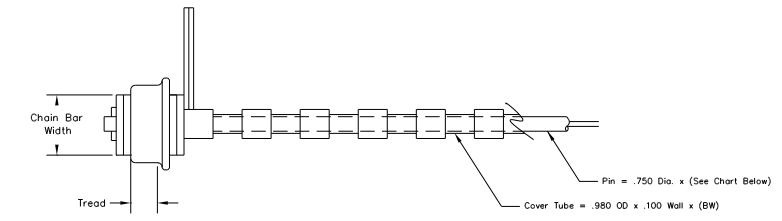
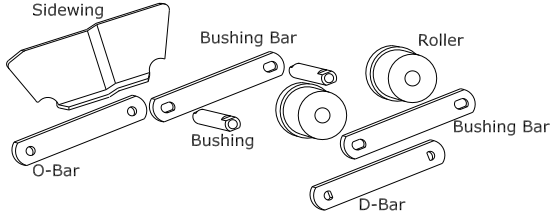
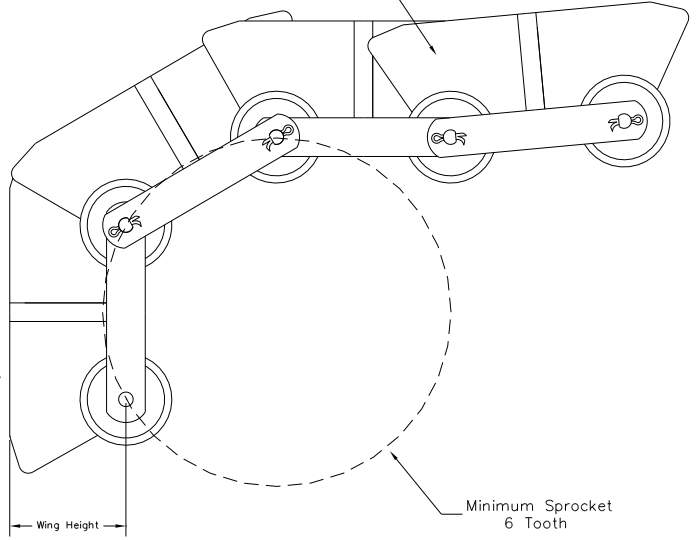
EXAMPLE
 6 229 - 60 - 4 - 6E3 - 3

PITCH
 THICKNESS
 WIDTH

LOCKING SYSTEM
 CHAIN STYLE
 WING HEIGHT

LOCKING SYSTEM OPTIONS
 2 = 3/4 - 16 Lock Nut
 3 = Cotter Pin
 4 = Welded Washer
 5 = Lubrication With 3/4 - 16 Lock Nut

Minimum Reverse Radius
 9" Pitch = 42"
 6" Pitch = 28"



6C2-3 CHAIN

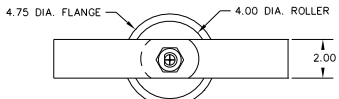
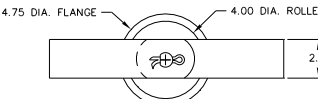
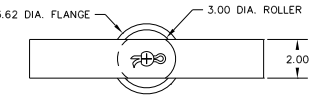
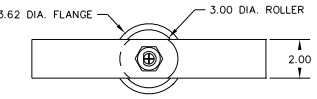
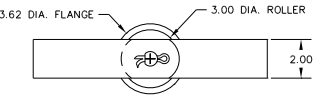
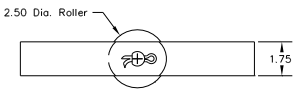
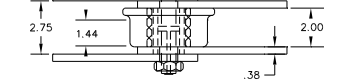
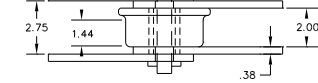
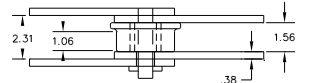
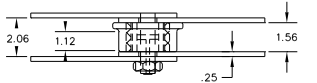
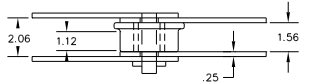
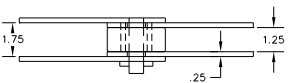
6E3-3 / 9E3-3 CHAIN

6E3RB-5 / 9E3RB-5 CHAIN

6EW-3 CHAIN

9F4-3 CHAIN

9F4RB-5 CHAIN



	BELT WIDTH						BELT WEIGHT (LBS. PER FT) (APPROXIMATE)										
	6C2-3	6E3-3	6EW-3	6E3RB-5	9F4-3	9F5RB-5	6179-6C2-3	6229-6C2-3	6179-6E3-3	6229-6E3-3	6179-6EW-3	6229-6EW-3	9179-9E3-3	9229-9E3-3	9179-9F4-3	9229-9F4-3	
Track Gage	BW+ 1 1/16	BW+ 1 13/16	BW+ 2 5/16	BW+ 1 13/16	BW+ 2 9/16	BW+ 2 9/16	12	38.30	40.90	41.10	44.00	46.80	46.90	41.50	42.90	51.40	54.00
Sprocket Centers	BW+ 2 1/4	BW+ 2 15/16	BW+ 3 7/16	BW+ 2 15/16	BW+ 4	BW+ 4	18	45.90	49.70	49.10	53.60	53.50	53.20	47.30	50.40	57.90	61.80
Spacing	1 1/4	1 9/16	1 9/16	1 9/16	2.00	2.00	24	53.50	58.50	57.10	63.20	60.90	63.10	53.10	57.90	64.40	69.60
Side Bar	1/4 x 1 3/4	1/4 x 2.00	3/8 x 2.00	1/4 x 2.00	3/8 x 2.00	3/8 x 2.00	30	61.10	67.30	65.10	72.80	68.90	73.00	58.90	65.40	70.90	77.40
Side Bar Thickness	1/4	1/4	3/8	1/4	3/8	3/8	36	68.70	76.10	73.10	82.40	76.90	82.90	64.70	72.90	77.40	85.20
Roller Diameter	2 1/2	3.00	3.00	3.00	4.00	4.00	42	76.30	84.90	81.10	92.00	84.90	92.80	70.50	80.40	83.90	93.00
Roller Tread	1 1/16	1 1/8	1 1/8	1 1/8	1 7/16	1 7/16	48	83.90	93.70	89.10	101.60	90.40	102.70	76.30	87.90	90.40	100.80
Bushing Length	1.75	2.06	2.31	2.06	2.75	2.75	54	90.20	102.50	97.10	111.20	100.90	112.60	82.10	95.40	96.90	108.60
Bushing O.D.	1.00	1.12	1.12	1.12	1.12	1.12	60	97.90	111.30	105.10	120.80	108.90	122.50	87.90	102.90	103.40	116.40
Pin Length	BW+ 5 9/16	BW+ 6 3/16	BW+ 7 3/16	BW+ 6 3/16	BW+ 8 3/16	BW+ 8 3/16	66	105.60	120.10	113.10	130.40	116.90	132.40	93.70	110.40	109.90	124.20
Pin Diameter	.75	.75	.75	.75	.75	.75	72	113.30	128.90	121.10	140.00	124.90	142.30	99.50	117.90	116.40	132.00
Belt Pull Lbs.	6675	9000	12,750	9000	12,750	12,750	78	121.00	137.70	129.10	149.60	132.90	152.20	105.30	125.40	122.90	139.80
							84	128.70	146.50	137.10	159.20	140.90	162.10	111.10	132.90	129.40	147.60
							90	136.40	155.30	145.10	168.20	148.90	172.00	116.90	140.40	135.90	155.40
							96	144.10	164.10	153.10	178.10	156.90	181.90	122.70	147.90	142.40	163.20



STANDARD AND CUSTOM CONVEYOR BELTING FOR BOTH O.E.M. AND REPLACEMENT MARKETS

This drawing is the property of MAY CONVEYOR INC. All rights reserved including the right to disclose and or reproduce to third parties this drawing in whole or in part without written consent of MAY CONVEYOR INC.